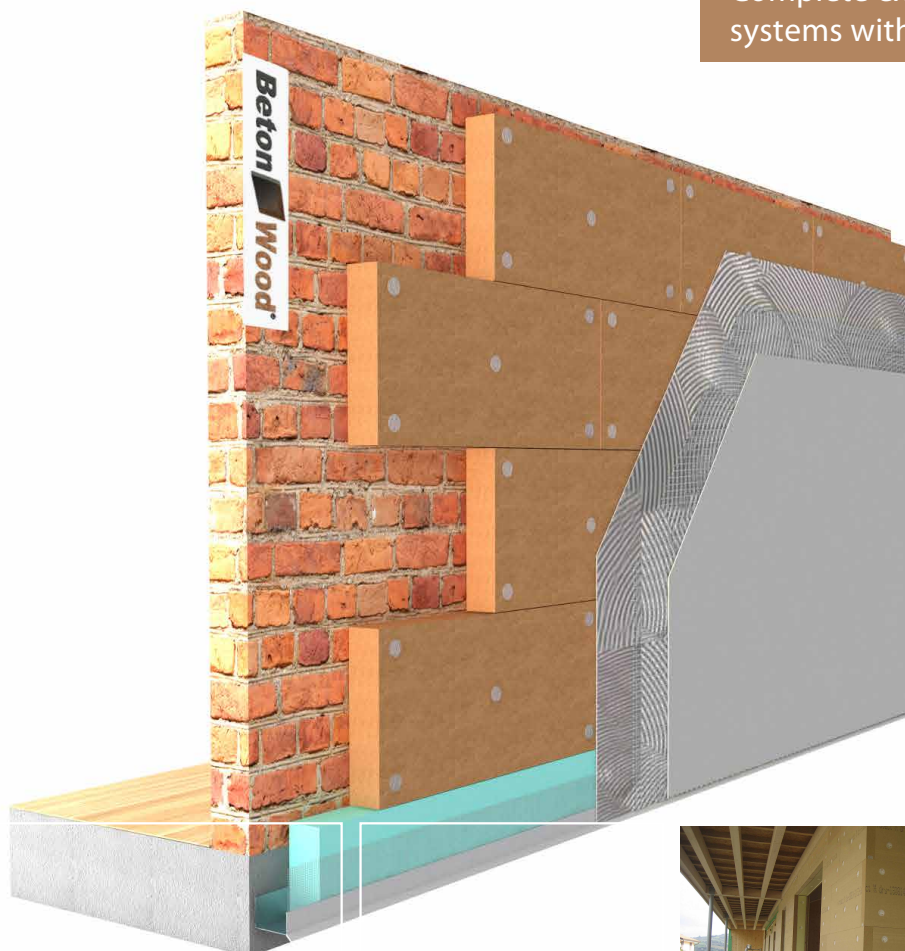


ETICS wood fiber pdry

Natural thermal insulation composite system with Fibertherm protect dry wood fiber panels

Beton Wood

Complete external insulating wall systems with high performances



| DESCRIPTION

The complete external thermal insulation composite system with high performance ETICS wood fiber protect dry guarantees the maximum comfort and maximum durability over time, with the international ETA certification.

The thermal composite system wood fiber panels type FiberTherm protect dry are rigid insulating panels with densities 110, 140 and 180 kg/m³, with a high resistance to compression and water repellents.

The ETICS wood fiber protect dry system consists in the installation of wood fiber panels on the external side of the building which improves the energy efficiency in a lasting way.

The materials used are completely natural and made with sustainable raw materials and life cycles.

The stratigraphy consists of breathable and plasterable wood fiber panels for high quality thermal insulation Fibertherm protect dry, FSC® certified, which have densities 110, 140 and 180kg/m³. The wood fiber panels are fixed with special plugs type Betonfix FIF-CS8 on masonry and Betonfix 6H-NT on wood support (x-lam or platform); the panels are then laid on a starting base composed of a BetonDripstarterPVC drip tray which guarantees excellent protection against rising damp. On the external side a first skimming layer of BetonAR1 GG must be placed, then, a glass fiber net for wood fiber application BetonGlass 160 and a second skimming layer BetonAR1 GG type must be installed.

Advantages

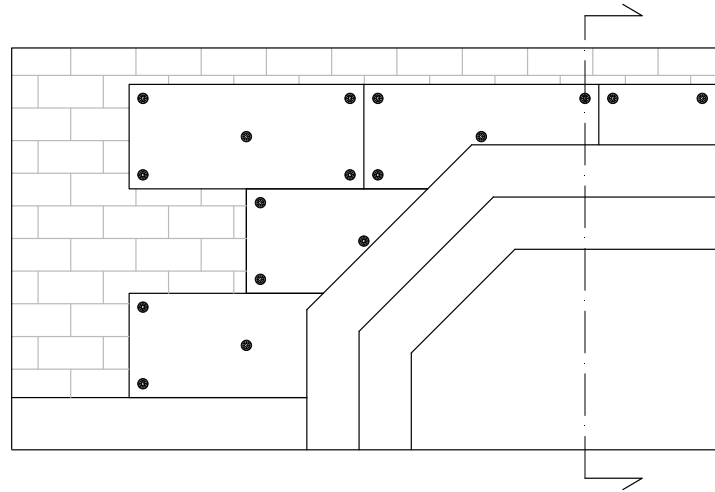
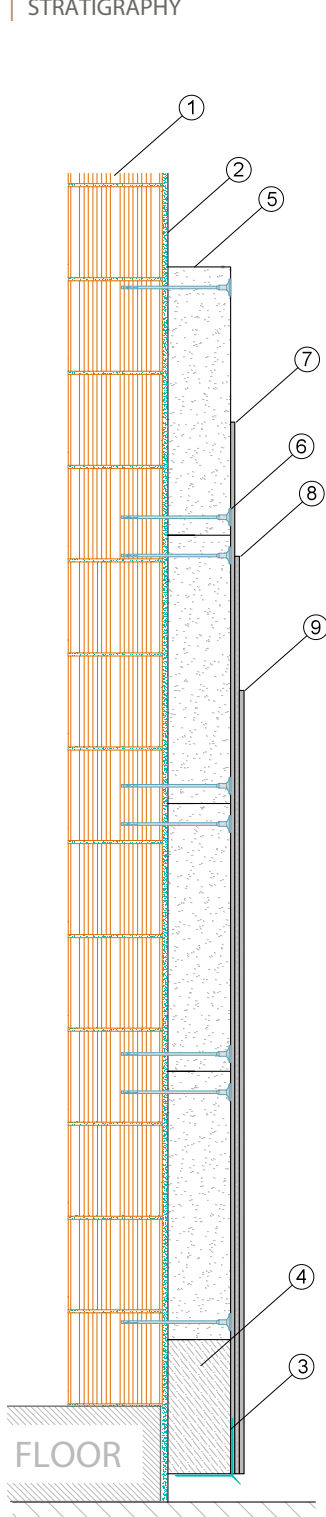
- Approved and secure fixing system: 750kg each panel
- Complete system: insulation, skimming layers, installation products and accessories
- High insulation thicknesses reachable; up to 16cm with a single layer
- Insulation in continuous composite system without thermal bridges and condensation
- Various thicknesses available and tongue and groove profile
- Excellent thermal and acoustic insulation
- Applicable on concrete, solid and perforated brick, Poroton brick, cellular concrete and lightened, solid wood panels, X-Lam



For more informations about the uses and the installation, our offices are ready to answer your questions on www.betowood.com



STRATIGRAPHY



- 1 Masonry or x-lam wall
- 2 Beton AR1 GG Monocomponent cementitious mortar for bonding and smoothing thermal insulation panels and "thermal insulation composite systems" (ETICS).
- 3 Angular starter base Beton DripStarter PVC PVC profile with thermosealed glass fiber mesh 165 gr / mq certified ETAG004. Sealed connection between the starting base and the armed skimming layer. It interrupts the flow of water avoiding infiltrations. Prevents cracking in the plinth area.
- 4 Styr XPS panel h30 cm Starting panel in Styr XPS extruded polystyrene that protects the panels from rising damp coming from the bottom.
- 5 Wood fiber Fibertherm protect dry Plasterable wood fiber panels available in three different densities 110,140 and 180 kg/m³ with an high compressive resistance, water-proof, excellent in the realization of certified thermal composite system.
- 6 Betonfix FIF-CS8 - ON MASONRY - Screwing fastening for materials of external thermal insulation composite systems (ETICS). The composite screw minimizes the thermal bridge.
or
Betonfix 6H-NT - ON WOOD - Flush or retractable fixing for external thermal insulation composite systems (ETICS) with certified Power-Fast screw.
- 7 Beton AR1 GG Monocomponent cementitious mortar for bonding and smoothing thermal insulation panels and "thermal insulation composite systems" (ETICS).
- 8 Net BetonGlass 160 Alkali-resistant glass fiber reinforcement net, with a density of 160 kg/m³, suitable for the reinforcement of skimming layers on new or recovered plasters, designed for insertion into thermal insulation systems in wood-fiber coat.
- 9 Beton AR1 GG Monocomponent cementitious mortar for bonding and smoothing thermal insulation panels and "thermal insulation composite systems" (ETICS).



SYSTEM'S PRODUCTS



BetonGlass 160 Alkali-resistant glass fiber reinforcement net, suitable for reinforcing skimming layer on new or recovered plasters, designed for insertion into thermal insulation systems. 50 mq rolls.

Yield 1.10 sqm required per effective square meter.



BetonAR1 GG Monocomponent cementitious mortar for bonding and smoothing thermal insulation panels and "thermal insulation composite systems" (ETICS). Consumption:

- 4,0 - 6,0kg/m² depending on the bonding technique.
 - 1,35-1,55kg/m² per mm of thickness as skimming layer (recommended: approx. 4 mm within 2 hands).
- Application: spatula



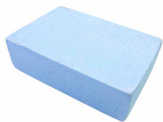
ON MASONRY - **BetonFix FIF-CS8** The composite screw minimizes the thermal bridge so that no traces appear on the façade. Less bit wear and puncture time thanks to a minimum installation depth of 35 mm in the support. The disc adapts perfectly to the insulation allowing the application of thin skimming layers.



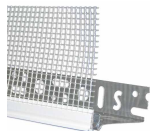
ON WOOD - **BetonFix 6H-NT** Pre-assembled fastening with the Power-Fast certified screw. This guarantees a secure grip on the support material. The minimum screwing depth of 30 mm ensures fast assembly. It is not necessary to pre-drill.



FiberTherm Protect dry Plasterable wood fiber panels available in three different densities 110, 140, 180 Kg/m³ with an high compressive resistance, water-proof, excellent in the realization of certified thermal composite system. Declared thermal coefficient λ_D [W/(m*k)] 0,037÷0,043. Available in the following sizes: 2.800x1.250 mm, 1.350x600mm, 1.200x400mm. Thicknesses from 40 to 240 mm.



Styr XPS Starting panel in Styrene XPS extruded polystyrene that protects the panels from rising damp coming from the bottom.



BetonDripStarter PVC PVC profile with thermosealed glass fiber mesh 165 gr / mq certified ETAG004. Sealed connection between the starting base and the armed skimming layer. It interrupts the flow of water avoiding infiltrations. Prevents cracking in the plinth area. Size 2,5x0,125 m. 25 pieces/package.

BETONWOOD Srl

Head office:
Via Falcone e Borsellino, 58
I-50013 Campi Bisenzio (FI)

T: +39 055 8953144
F: +39 055 4640609

info@betonwood.com
www.betonwood.com

PEFTHPD - ST R.18.5

CERTIFICATIONS

The ETICS wood fiber protect dry external wall insulation system is manufactured with CE certified materials in accordance with current regulations.

The certificates of the individual products are available on request.

Beton Wood

